



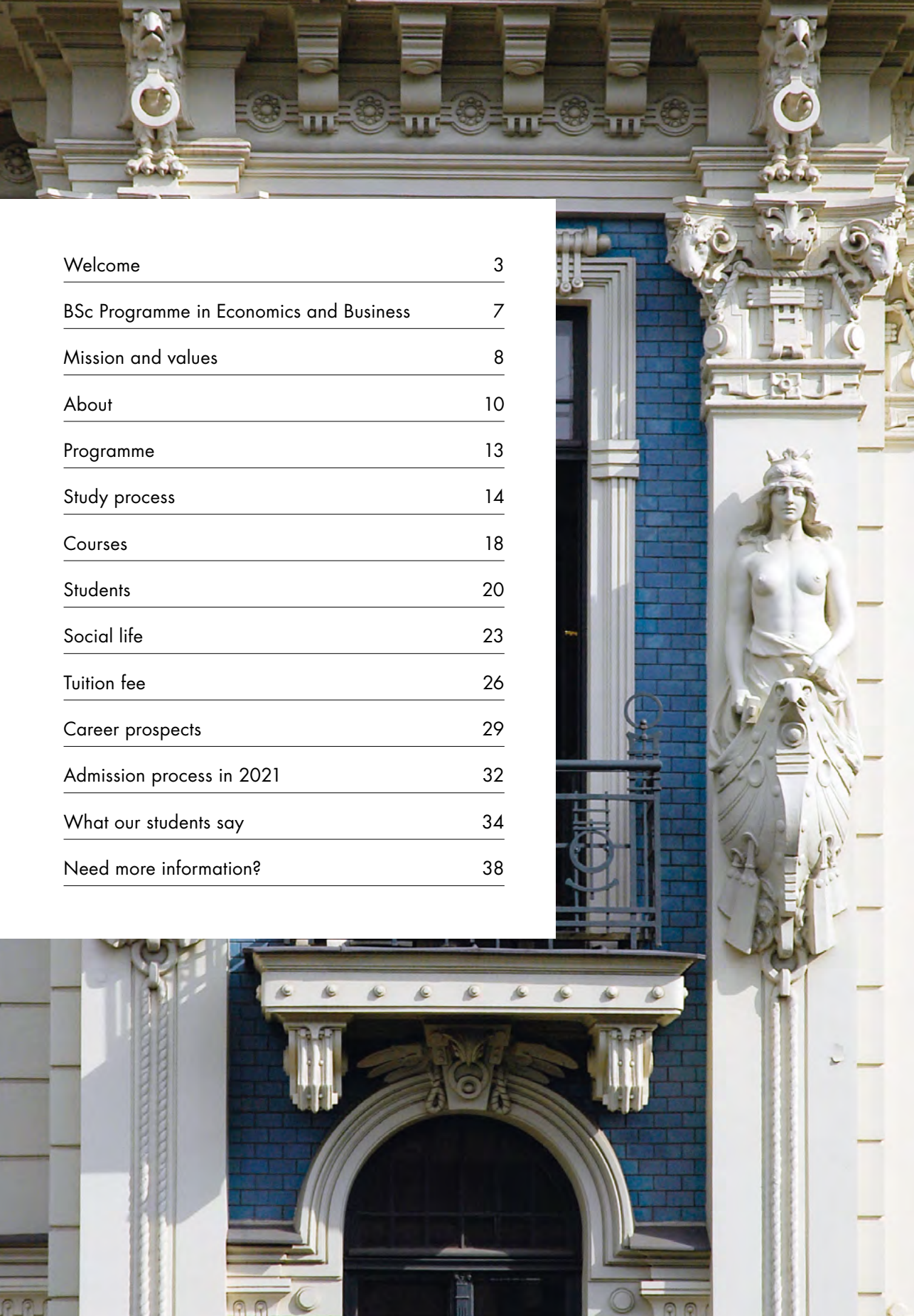
SSE RIGA

BSc Programme in Economics and Business

Duration of programme	3 years
Mode	full-time
Language of instruction	English
Class size	130 students
Degree	Bachelor of Science
Location	Riga



Welcome	3
BSc Programme in Economics and Business	7
Mission and values	8
About	10
Programme	13
Study process	14
Courses	18
Students	20
Social life	23
Tuition fee	26
Career prospects	29
Admission process in 2021	32
What our students say	34
Need more information?	38



Welcome to the Stockholm School of Economics in Riga



For more than two decades, the Stockholm School of Economics in Riga (SSE Riga) has been educating students in the fields of economics and business.

“At this moment SSE Riga graduates can be found in almost all sectors of the economy and in more than 60 countries around the world. Even though their careers are indeed all very different, they all have in common that at one point in time they entered the doors of SSE Riga to take up the SSE Riga challenge. I do hope that you will be among the next generation of students taking up this challenge. Looking forward to welcoming you to SSE Riga in August!”

Anders Paalzow, SSE Riga Rector

SSE Riga offers two accredited study programmes: a three-year bachelor's programme in economics and business and a two-year professional master's programme in business administration (Executive MBA).

Given the student body of 450 students and the comparatively small size of the School, staff and lecturers are able to work closely with students.

Studies in an international environment with students from more than a dozen countries and faculty members from Europe, the United States and Australia offer a global learning experience that is enriched by the student mobility programme, providing 40 students annually with an exchange semester at one of our partner universities in Europe, Hong Kong, Korea, and the United States.

Many students make lifelong friends and important connections while at the School. The School also offers a wide range of extra-curricular activities, including sports activities, a debate society, and other clubs.

SSE Riga has proven to be a very high-quality education provider over these years with an excellent graduate employment record.





SSE Riga is located in the beautiful Art Nouveau District of Riga, a ten-minute walk from historic Old Riga. The SSE Riga building is an architectural monument of national significance in the art nouveau style; it was originally designed as a school by architect Mihails Eizensteins.

The decorations on the façade signify victory, knowledge and unity, and in fact it constitutes a victory to enter SSE Riga and to graduate at the end, but once you have done so the knowledge gained and the ties with the School last for a lifetime.

SSE Riga offers two accredited study programmes:

- three-year bachelor's programme in economics and business
- two-year professional master's programme in business administration (Executive MBA)



BSc Programme in Economics and Business

You don't have to go far from home to study at one of the best business schools in Europe.

-
- Module-based three-year programme, delivered in English
-
- The student group consists of 130 students from 10+ countries
-
- Upon completion of the programme, the degree of bachelor of science (BSc) is issued
-
- The programme is accredited by the Latvian Ministry of Education and Science



**Application deadline for
the study year 2021/2022:
April 25, 2021**

**Start of the programme:
mid-August 2021**

SSE Riga mission and values

The mission of SSE Riga has been, since its inception, to provide a state-of-the-art education in business and economics that contributes to the economic and social development of the region, in particular Estonia, Latvia and Lithuania.

Research is also a part of SSE Riga's mission. The School produces state-of-the-art research of relevance to the Baltic countries

and actively participates and fosters public debate in its field of competence.

The core values of SSE Riga provide a foundation for faculty, staff, and students to accomplish its mission. These core values are integrity, community, and excellence.

Integrity

We adhere to high ethical standards by applying accountable academic and administrative policies, practices and services; the School requires its faculty, staff and students to practice dignity and honesty in actions and words.

Community

We nurture a diverse and caring community in which each member of the School is valued and respected; a positive and friendly atmosphere is created, allowing space for individual uniqueness and teamwork collaboration.

Excellence

We demand intellectual rigor and critical enquiry in advancing academic work and expanding knowledge; we serve as a catalyst for positive changes in the Baltic countries and beyond.



SSE Riga also encourages you to cross as many borders as possible, whether national, cultural, or ethnic. This will facilitate and enrich your walk along the path of SSE Riga graduates.

About

SSE Riga is known as one of the finest business schools in Europe – according to the Financial Times Ranking of Top European Business Schools, SSE Riga, as part of the SSE Group, is the No. 1 business school in the Baltic/Nordic region.



- You'll experience a very international study environment – SSE Riga has bachelor students from 10 countries and international exchange students from 13 countries.
- You'll join a very strong and supportive community – alumni are actively involved in all SSE Riga activities and financially support the brightest young students.
- You'll study in a very interesting region of Europe since Riga has always been an international city serving as a gateway between the East and West.
- You'll enjoy the family-like atmosphere – admitting just 130 top undergraduates in one class allows for personalised attention to students and it takes just a few weeks to get to know all of your study mates.

The SSE Riga diploma is highly respected and opens doors for a successful career.

SSE Riga is a separate community that brings together very talented, but more importantly motivated and striving individuals, who are not willing to accept mediocrity, but rather want to achieve great heights in both their personal and professional lives.





Programme

Upon graduating, you can expect to work in a wide range of sectors, including finance, banking, auditing and consulting, IT and telecommunications, advertising and media, government, manufacturing, education and research.

SSE Riga provides a three year academic study programme in economics and business leading to a bachelor of science degree in three years. The academic curriculum of the programme covers areas of both economics and business, allowing students to gain a wider perspective and thus have more career options after graduation.

- You'll concentrate on one subject at a time; a maximum of three core courses are delivered simultaneously.
- You'll choose specialisation courses in the last study year from the following options: Economics, Finance, Retail and Entrepreneurship.
- You'll have the opportunity to choose from a variety of elective courses in the social sciences and entrepreneurship.
- You'll gain practical experience during the two internships that will give you an advantage in the job market.



Study Process

The study process involves five main components: core courses, specialisation courses, elective courses, the internship, and the bachelor's thesis.

Studies require full-time involvement and undergraduate students are expected to devote all their attention to studies since the teaching method at SSE Riga is very intense and interactive.

”

You'll get real-world insights from industry professionals via company visits and workshops.





SSE Riga's learning environment and methods prepare students for a real business environment and develop strong and hardworking personalities.

You'll study with international lecturers who are well recognised experts in their chosen fields in the Baltics, Europe, and overseas.

Your study achievements will be measured by various methods including assignments, research reports, project work, case study analyses, group or individual presentations and written examinations.

You'll become confident when presenting in front of a large audience since students present their project work in front of the class and an evaluator.

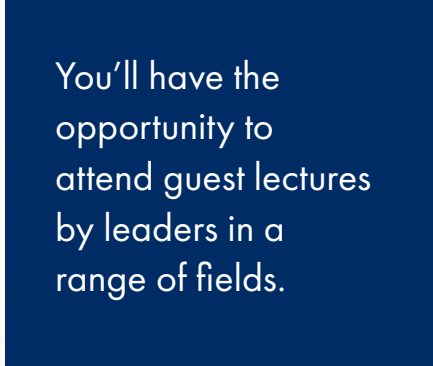
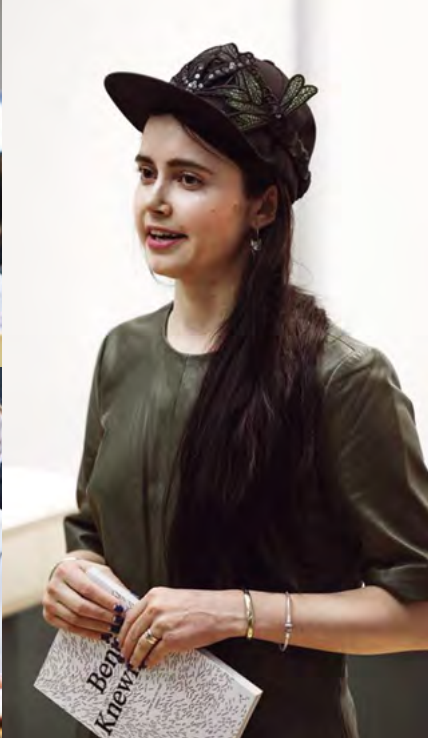
You'll advance your teamwork skills as the majority of the courses involve project work in international teams.

You'll receive guidance and support from a personal Academic Advisor.



Students get a good grip on business relations, meet start-up experts, and visit enterprises.





You'll have the opportunity to attend guest lectures by leaders in a range of fields.



Courses

The subject range is interesting not only for mathematically inclined students, but also for students with entrepreneurial spirit.

Core Courses

YEAR 1 COURSES	YEAR 2 COURSES
<ul style="list-style-type: none">• Academic Studies and Critical Thinking• Financial Accounting• Mathematics• Economic Statistics• Microeconomics• Academic English• Data Analysis• Managerial Economics and Operations Management• Organization and Management• Macroeconomics• Ethics and Sustainable Business• Introduction to Entrepreneurship• Marketing• Economic and Consumer Behaviour• Management Accounting and Finance• Public Economics• Civil Protection• Business and Leadership Skills & Internship (4 weeks)	<ul style="list-style-type: none">• Welfare Economics and Public Policy• International Finance• Human Resource Management• Econometrics• Market Research• Business Law• Financial Economics• Economic Anthropology• Accounting and Finance• Research Methods for Bachelor Thesis• International Economics• Business and Leadership Skills & Internship (6 weeks)

Having completed the programme, SSE Riga graduates possess excellent powers of analysis and critical thinking, rational argumentation skills, and are both entrepreneurial and professional.

60% of our core faculty is international

YEAR 3 COURSES

- Specialisation: Economics
- Specialisation: Entrepreneurship
- Specialisation: Retail Management
- Specialisation: Finance
- Artificial Intelligence
- Strategy
- Business and Leadership Skills
- Bachelor Thesis

* Minor adjustments to the course schedule may occur.

ELECTIVE COURSES

- The Future of Work
- Critical Thinking and Argumentation
- Quantitative Business Intelligence
- Financial Mathematics
- Introduction to Taxation
- Globalisation
- Business Analytics
- Fundamental Principles of Sales
- The Political Economy of Today's Russia
- Climate Change
- Governance-Risk-Compliance in Banking
- Negotiation and Dispute Resolution
- Machine Learning
- Game Theory
- Welfare State
- Investments
- Understanding and Preventing Corruption
- English Pronunciation
- Introduction to Media Literacy
- Circular Economy in Nordic Environments
- Circular Economy in Food and Agriculture Industry

Students

At SSE Riga you'll experience a very international study environment – the School has bachelor students from more than 10 different countries and international exchange students from more than 15 countries.

SSE Riga students come from Latvia, Lithuania, and Estonia as well as from Belarus, Russia, Georgia, Ukraine and Moldova.

Additionally, students from Germany, Spain, Italy, France and elsewhere choose to spend their exchange semester at SSE Riga.

”

**Network —
studying at SSE
Riga you are
surrounded by
incredibly bright
minds from the
Baltics and other
parts of Europe.**



The student stands at the centre of the education offered at SSE Riga. Here you will experience an open and informal study environment, the feeling that your opinion counts and every professor will actually know you by name! Currently, SSE Riga is a “second home” for full-time students from Latvia, Lithuania, Estonia, Russia, Ukraine, Belarus, Moldova, Georgia, Romania, Afghanistan, and the UK.





Social life will play a major role in your SSE Riga experience. Graduates often mention that most.

At SSE Riga you will find activities to cater to all interests: the Student Association, the Debate Society, the Charity Club, the Investment Fund, the student magazine, the choir and sports.

You'll develop your managerial skills by organising big events like the annual career fair "Days of Opportunities" or the annual "Christmas Ball" for all students.

You'll have the opportunity to participate in more than a dozen interest groups formed by students.





You'll experience the best parties in town organised by the SSE Riga Student Association.



Tuition fee

SSE Riga's tuition fee in the bachelor's programme is EUR 6,250 per year.

Tuition fee waivers are available to students from the Baltic countries, reducing the tuition fee to EUR 4,150 per year.

Candidates apply for waivers as part of the application process. Tuition is fixed for all three years and is set at the tuition rate at the time a student enrolls in the programme.

Citizens or non-citizens of Latvia, citizens of other EU or EEA countries or Swiss Confederation as well as permanent residents of the European Community, who have a valid Latvian residence permit, can apply for the Latvian state-guaranteed student and study loans. In case the state guaranteed loans are not available or if additional borrowing is needed, SSE Riga has designed a special study loan programme to support students from the Eastern Partnership and Baltic countries.

However, the ability to attend SSE Riga does not depend on the student's financial situation – the majority of SSE Riga students receive significant financial aid.

- You'll get course handouts and printouts at no additional cost.
- You'll get books from the SSE Riga Library for each course.
- You'll have access to an extensive range of databases and the best selection of books covering the main disciplines of business and economics in the SSE Riga Library.
- You'll get an opportunity to participate in the following sports activities: yoga, aerobics, basketball, volleyball, floorball, table tennis and swimming. It is free of charge!

SSE Riga offers Admissions Scholarships

SSE Riga will award up to 25 scholarships to outstanding students. These scholarships will be awarded irrespective of the applicant's home country. The Admissions Scholarship will provide partial or full tuition fee waivers for one to three years.

These scholarships will be awarded on a competitive basis taking into account test and interview results, academic excellence, relevant extracurricular activities and student cohort diversity.

All eligible applicants will automatically be considered for the SSE Riga Admissions Scholarship and so no separate scholarship application is required.

Scholarship award decisions will be announced to applicants together with an admissions offer, and the value of the scholarship will be deducted from the tuition fee.

SSE Riga offers a number of other scholarships, for example, all SSE Riga students from Latvia, Lithuania and Estonia are granted the Baltic Student Scholarship, and first-year students from Estonia can be awarded a special scholarship from the Estonian alumni community. SSE Riga students can also apply for loans to cover tuition fees and living expenses.

Please visit the section **"Tuition Fee & Financial Aid"** and find out more!





Career prospects

SSE Riga graduates are very successful in today's competitive labour market, pursuing a range of careers in both the private and public sectors.

More than 2350 students have graduated from SSE Riga so far, and many of them hold senior managerial positions or have started their own businesses.

The majority of SSE Riga graduates enter the workforce as economists, financial or business analysts, and marketing specialists.

” Of Latvia's 100 biggest companies, 13 are run by our former students and five of them are on the board of Latvia's TOP 10 businesses.

OUR GRADUATES
FROM LATVIA
RUN OR OWN

463
COMPANIES

WITH A
TOTAL TURNOVER OF

5.2
BILLION EUR

EMPLOY OVER

20,000
PEOPLE



Sāra Zdanovska

Student President

Student Association 2020

The Student Association is the union organization of students studying at SSE Riga. The presidential team of the Student Association and the chairpersons of seven committees are elected by SSE Riga students and work for a year to benefit the lives of SSE Riga students.

More information:
association.lv

” There are over 25,000 universities in the world, and, although SSE Riga already stands out with its academic standing, bright alumni, and truly wonderful staff, there is even more to it... As I would like to call it – a cherry on top – the SSE Riga Student Association. The Student Association serves as a bridge between SSE Riga students, administration, and faculty. It is almost impossible to find an SSE Rigan who is not involved in any of the activities we offer. The Student Association creates the most unforgettable events and shapes the study process while communicating with lecturers, arranges career fairs, invests in stock markets, organizes graphic design workshops, and there is even more to it than that.

Everyone can find a way to express and even learn something new about themselves while networking with each other, thus making the study process in this university the most unforgettable time of your life.

”

SSE Riga develops in you the mindset of a fighter and a winner. The environment pushes you to the limit, making you work harder than you ever did before. It's a big challenge, but it's also a great way to improve yourself. I assure you it's worth it!

Nicoleta Barba | Moldova

”

Do you want to be challenged and encouraged? Attending a lecture by Latvia's Minister of Finance, debating against the First Vice-President of the European Commission, networking with the CFO of SEB, learning big data languages and then enjoying a great party in the evening – this is a normal day for an SSE Riga student!

Vakhtangi Ivehiani | Georgia





Admission process in 2021

To be eligible to apply to SSE Riga,
a candidate must meet the following
requirements:

1. A secondary school education completed by July 2021 or earlier.
2. State examination results in mathematics and English.



**The new academic
year begins in
mid-August, 2021**

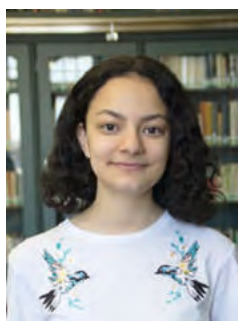
➔ ALL STEPS OF THE ADMISSIONS PROCESS ARE FULLY ONLINE

Step 1 April 25, 2021	Online application deadline.
STEP 2 May 15, 2021	The SSE Riga Admissions Test takes place. The Admissions Test will involve basic math, logical aptitude and English language topics. Applicants should have a computer with camera and microphone, stable internet connection and a room where no one will disturb for approximately 3 hours. All applicants will be informed about the details by e-mail.
STEP 3 June 7 — 18, 2021	Top-performing candidates, according to the SSE Riga Admissions Test results, will be selected for online interviews.
Final Decision June 25, 2021	An acceptance letter is sent to admitted students.



If someone asked me to describe SSE Riga in one word, it would be “OPPORTUNITY”. This university is an opportunity hub, from its lecturers, who have major experience in their field, to the broad network provided and the possibility to access the Thomson Reuters database as well as the numerous unique academic articles on desired topics. Moreover, the opportunities are not only for academic-related activities, but also many other different areas of interest. Are you a sports prodigy? Go to the weekly sports practices and participate in numerous competitions with other universities. Do you have a hidden talent in writing or are you a wolf of wall street in the making? Join Insider or conquer the world of finances by becoming a member of IFund. There are many more examples that could be listed, but the key idea behind them all is that SSE Riga provides you with all of the necessary means to become the best version of yourself, you just have to use them. As for me, SSE Riga is about great people, professional lecturers, challenges and constant and exponential growth.

Vladislav Cernouțan | Moldova



As I am not in my home country, it has turned out that almost all my life right now revolves around SSE Riga. I know it might sound sad, but actually SSE Riga has made my life much more interesting and active than it has ever been! Apart from my studies, I decided to fill my free time with extracurricular activities. Even in the student organisations I am still learning and the biggest lesson so far is how to communicate with people. I considered myself as an open-minded person before, but SSE Riga has helped me to expose a lot of “blind spots”. Overall, this university is the biggest contributor to my personal development right now. I’m not just learning from my studies and lecturers, but also from my peers, who are the smartest people I know. Surrounding myself with this kind of people has made me more inspired to become a better person in so many ways.

Diana Geiushova | Russia



The SSE Riga Student Association and student organisations offer plenty of activities to get involved in and I particularly enjoy the fact that I can combine several of them depending on my schedule and preferences. I have chosen to be an editor in a student magazine called Insider, to help revive Junior Peak Time (an international business competition for students) and I am also the Vice President of the Student Association. These activities make my study life much more engaging, meaningful, and enjoyable. It can however get a bit overwhelming to be as active as I am, but the struggles I encounter usually teach me a lesson or two - they have helped me deal with the burden of responsibility and through them I have improved my time management and problemsolving skills. I feel that the more I do, the more productive I become, which was evident during my internship this summer, where my employer appreciated that I get things done both quickly and to a high standard.

Austėja Denisovaite | Lithuania



SSE Riga students are taught to do many things simultaneously. I was amazed by the student involvement in different organisations and the proactivity and discipline that is suddenly instilled even in first year students - everyone is busy and always working on something awesome. **I myself became the chief of the Debate Society, which has given me valuable real-life experience in managing people, organising events (with thousands of Euros in revenue and hundreds of participants), marketing, budgeting and many other things that most other students would only start learning as they enter the job market.** I think that the SSE Riga approach of giving students a lot of responsibility and rewarding ways to develop themselves into disciplined business-people is very unique and the #1 reason to study here.

Richard Kesküla | Estonia



The studies at SSE Riga are sometimes tiring, always challenging, yet never boring. That is exactly what has made me understand that I can do much more than I thought I could and accomplish more than I have on my to-do list. It is guaranteed that we do not merely learn things by heart to pass exams but also use our knowledge to carry out various projects – case studies, reports, team assignments, videos. However, the experience here would not be complete without being involved in extracurricular activities – **being one of the board members in the Student Association has not only improved my leadership and teamwork skills but also allowed me to acquire skills that I never thought I would learn while studying economics and business.** Taking part in the Days of Opportunities organisation, which takes care of the annual career day, allowed me to work on my sales skills, step out of my comfort zone and, thus, grow. Besides macroeconomics, finance and business ethics, I have learned perseverance and resilience, adaptability and communication.

Dana Supe | Latvia



The most important thing that SSE Riga is doing is preparing us (students) for our working lives. I feel that even after the first year we are already skilled enough to be employed by banks and other companies. By the end of the third year, almost everyone has found permanent workplaces and started a professional career. **This growth is encouraged with the help of a close network of course-mates, alumni, lecturers, administration and even Executive MBA students.** I perceive SSE Riga as an investment and, in my eyes, it has already started paying back.

Larysa Karsayeva | Belarus



Need more information?

Visit us

The best way to find out about SSE Riga is to visit us!

During your visit, you will be able to speak with our Recruitment Coordinator and learn more about the application process, scholarship opportunities and courses.

We can also offer to arrange a meeting with a current SSE Riga student from your home country and a chance to attend lectures or seminars as well as tour the facilities.

To apply for a personalised on-campus visit on the SSE Riga website, please visit the section **“Apply for a Visit”** on our website.

Chat with our students

Do you wonder what it is like to study at SSE Riga? Want to know more about the study programme and student life? Worried about accommodation, health services or average living expenses in Riga?

Send a message to one of our friendly student ambassadors via an online chat plat-

form. Students will instantly receive notification when you ask a question on the chat platform and will gladly share their personal experience.

It takes just a minute to create an account and start chatting, so please visit the section **“Chat with Our Students”** on our website.

Sign up for online events

Our recruitment events are being run virtually this season - we will bring our staff, students and campus life to you via online events!

During our virtual Open Day, you'll hear from the SSE Riga admissions team, listen to our faculty members and interact with current students. The webinars will address frequently asked questions about scholarships and admission procedures. During the Alumni Talks series our graduates will discuss how their time at SSE Riga prepared them for their life journey after graduation.

Follow SSE Riga social media and visit the section **“Events”** for the latest updates on upcoming events!





To keep up to date with the latest activities at SSE Riga:

• facebook.com/SSERiga • twitter.com/SSE_Riga • instagram.com/SSE_Riga

Stockholm School of Economics in Riga • Strēlnieku iela 4a • Riga LV-1010 • Latvia

Phone: +371 67015804 • E-mail: admission@sseriga.edu • www.sseriga.edu